



*Girls thrive here*

[SELWYNHOUSE.SCHOOL.NZ](http://SELWYNHOUSE.SCHOOL.NZ)



*An International  
Baccalaureate School*

# Our vision

We inspire our students to learn through continuous inquiry, empowering them with the skills, knowledge, courage and optimism to become caring, active, life-long learners who enhance the lives of others.

# Our values

Our core principles form the foundation of our actions.

The International Baccalaureate (IB) designed the IB Learner Profile, a collection of qualities all IB schools aim to cultivate in their students, staff, and community members. Selwyn House wholeheartedly embraces the IB Learner Profile, adopting these attributes as our school's guiding principles. Our students and educators collaborate to embrace and nurture these characteristics within each other.

## **Inquirers**

Māhirahira

## **Knowledgeable**

Mōhiotanga

## **Thinkers**

Whai whakaaro

## **Communicators**

Kaiwhakawhiti kōrero

## **Principled**

Whai Tikanga

## **Open-minded**

Mākohakoha

## **Caring**

Manaakitanga

## **Risk-takers**

Auahatanga

## **Balanced**

Taurite

## **Reflective**

Whakaaro



# Nau mai, haere mai Welcome

**JULIE CALDER**  
**PRINCIPAL**

"Our goal at Selwyn House School is to equip each student with the knowledge, skills and attitudes necessary to be confident and capable learners. Successful learning involves making positive, healthy connections focused on collaboration, empathetic understanding and forming lifelong relationships."



# Selwyn House School

Selwyn House School in Christchurch, New Zealand is comprised of a co-educational pre-school for ages 2.5–5 years and a Year 1–8 girls' independent primary school. It provides a future-focused education, built on nearly a century of tradition.

Selwyn House School is an International Baccalaureate School (IB) offering the Primary Years Programme (PYP) across all year levels. Our teachers are extensively trained to implement the PYP curriculum to prepare students for the challenges and opportunities they will encounter using the latest technological tools within a creative and nurturing environment. With access to modern facilities and outstanding teachers, our students learn to think creatively, work collaboratively and to approach each new challenge with a can-do attitude. They become problem-solvers, powerful thinkers and considerate of the world around them.

PHONE +64 (03) 355 7299

EMAIL [office@selhouse.school.nz](mailto:office@selhouse.school.nz)

122 Merivale Lane, Christchurch, New Zealand

[SELWYNHOUSE.SCHOOL.NZ](http://SELWYNHOUSE.SCHOOL.NZ)





# Pre-school

## 2.5 YEARS – 5 YEARS

Selwyn House Pre-school provides co-educational early childhood education.

Our unique pre-school programme is underpinned by the International Baccalaureate Primary Years Programme (PYP). We draw upon the world-renowned Reggio Emilia approach and Te Whāriki, the New Zealand early childhood curriculum. We celebrate the natural wonder and curiosity of children, which fosters a life-long love of learning.

Our Transition to School programme ensures all students are prepared for Year 1. Additionally, girls who are entering Year 1 at Selwyn House School partake in further experience and transitional days alongside other families entering at similar times.

### ***Timetabled subject areas:***

Art, Buddies, e-Learning, Future Coders, Library, Music & Dance, Perceptual Motor Programme (PMP), Performing Arts, Playball, Spanish, Swimming, Yoga & Mindfulness.



# Years 1 & 2

## JUNIOR SCHOOL

Every day, our Junior School is a hub of discovery, igniting a passion for learning.

At Selwyn House School, we provide a nurturing and secure environment where girls can grow and flourish. Here, they cultivate a strong sense of shared purpose, surrounded by encouragement, excitement, challenges and respect.

Importance is placed on the core curriculum areas of literacy, writing and mathematics. These are individually tailored to suit the specific learning needs of each student.

### ***Timetabled subject areas:***

Art\*, Mathematics, Mechatronics\*, Music\*, Performing Arts\*, Physical Education\*, Reading, Science, Spanish\*, Swimming, Units of Inquiry, Writing.



# Years 3 & 4

## JUNIOR SCHOOL

Selwyn House School instils essential skills in our students that teach them to express themselves as capable communicators and that nurture their self-reliance.

This intimate setting ensures that every girl receives the personal attention she needs to thrive academically, build her confidence, and foster her individuality.

Learning in Years 3 and 4 continues to centre around the core curriculum subject areas with a strong emphasis on literacy, writing and mathematics.

### ***Timetabled subject areas:***

Art\*, Kapa Haka\*, Mathematics, Mechatronics\*, Music\*, Nature Diary, Performing Arts\*, Physical Education\*, Reading, Science, Spanish\*, Swimming, Units of Inquiry, Writing.

\* Denotes taken by specialist teacher.



## Years 5 & 6

### MIDDLE SCHOOL

During Years 5 and 6, girls embark upon a transformative journey of personal and intellectual growth, uniquely shaped by each individual's disposition. Characterised by an innate thirst for knowledge, boundless energy, curiosity, and a readiness to solve our world's complex challenges, these formative years are a remarkable juncture in their development. At this level the focus is on fundamental knowledge, skills and understanding. Girls are provided with opportunities to express their ideas, and to follow independent lines of inquiry.

Our globally-oriented curriculum is intellectually stimulating and deeply relevant to the rapidly evolving global landscape. Our pedagogical approach is tailored to cultivate positive and well-rounded individuals. Our overarching objective is to foster independence and instil a heightened sense of responsibility for one's learning, preparing our students for a seamless transition into our Year 7 and 8 programmes.

#### ***Timetabled subject areas:***

Art\*, Health, Kapa Haka\*, Literacy, Mathematics, Mechatronics\*, Music\*, Performing Arts\*, Physical Education\*, Science, Spanish\*, Units of Inquiry.



## Years 7 & 8

### SENIOR SCHOOL

During the pivotal stages of Years 7 and 8, we are committed to fostering an educational environment that prioritises the holistic development of every student. We emphasise cultivating a dynamic learning mindset, encouraging them to explore complex academic programmes, embrace intellectual diversity, and develop adaptability and resilience. Our Senior School programme is engineered to provide each student with an array of intellectually rigorous experiences and multi-faceted challenges, creating a solid academic foundation and the opportunity to acquire invaluable life and social skills.

Upon completing Year 8, our students are positioned to take the next step in their academic journey with unwavering confidence. They emerge well-prepared to tackle the challenges ahead, armed with a formidable blend of intellectual understanding, critical thinking abilities, and the life skills necessary to thrive in an ever-evolving educational and social landscape.

#### ***Timetabled subject areas:***

Art\*, English, Health, Kapa Haka\* Mathematics, Mechatronics\*, Music\*, Performing Arts\*, Physical Education\*, Science\*, Spanish\*, Units of Inquiry, Science & Technology Project (Year 7)\*, Exhibition Passion Project (Year 8).

*\* Denotes taken by specialist teacher.*

# A place to thrive

Selwyn House School, founded in 1929 on the educational principles of the visionary Charlotte Mason, holds a profound commitment to personalised education, rooted in language, the arts, and science. Charlotte Mason believed that education was about finding out who we were and how we fit into the world of human beings and into the universe. She firmly believed in the inherent potential of every child, and emphasised the cultivation of diligence and achievement as vital guiding principles.

Today, Selwyn House School provides a forward-thinking curriculum, designed to prepare students for the challenges of tomorrow. These contemporary additions seamlessly integrate with the original vision of Selwyn House School, which remains steadfast in its dedication to meeting the unique learning needs of each girl.

At Selwyn House School, we equip students with the tools to excel. It is where intellectual and creative self-expression flourishes. Here, we nurture and empower girls as they transition into self-assured individuals, fostering lifelong friendships among peers and instilling values of self-worth. The dynamic educational environment thrives on reflection, understanding, collaboration, and a high level of engagement.









Primary Years  
Programme

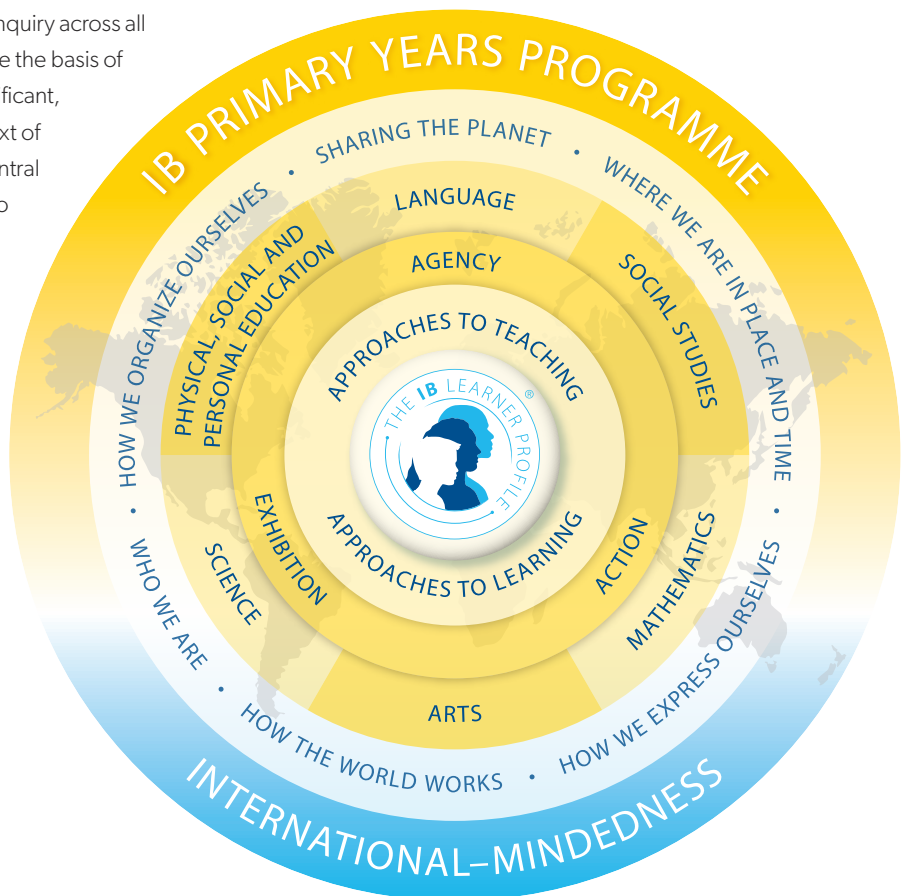
# The IB Primary Years Programme

Selwyn House School is proud to deliver the International Baccalaureate (IB) Primary Years Programme (PYP) from Pre-school to Year 8. The IB offers a high-quality curriculum model, which encourages international mindedness and a positive attitude towards learning. Selwyn House School is committed to structured, purposeful inquiry, based on themes of global significance.

Teachers and students use the six trans-disciplinary themes and key questions to structure their units of inquiry across all subject areas. The essential elements provide the basis of a primary education that is challenging, significant, relevant, and engaging. It is within the context of each theme that students explore related central ideas, connect and apply prior knowledge to new situations, and deepen their existing knowledge. These themes engage the learning community in rich dialogues and ongoing collaboration to build an understanding of themselves, their wider community and the world.

Students develop their communication, critical thinking, research, social, self-assessment and self-management skills.

We provide students at every year level with opportunities to reflect upon, choose and act on issues of importance and relevance to them. In doing so, we develop in our students an understanding that they can make a difference to their world, both locally and globally.





# Celebrating the PYP

Community, respect, and empathy are strong elements of the Primary Years Programme (PYP).

Across all year levels, Units of Inquiry are celebrated. These moments of reflection are important for both the student and their families.

In both Year 7 and 8 girls are engaged in major projects that draw on and extend the PYP attributes they have developed throughout their schooling so far.

In Year 7, students participate in a robust and interesting learning experience where each girl devises a question that is of interest to them and conducts an original scientific inquiry around it, or designs and constructs a technological product to meet a need that they have identified.

In Year 8, Exhibition is the culminating experience of a child's journey through the PYP. This Exhibition (or Passion Project) is a year-long inquiry where girls explore something they are deeply passionate about, developing their skills and using them to make a positive difference in their world.

Experts mentor girls to support them in this venture. The growth seen in the girls as they work through this process is always impressive, and the sense of accomplishment in taking a concept from original thought through to completed project is invaluable.





# Fostering a love of learning

Our educational approach acknowledges and amplifies the distinct capabilities of each individual student.

With small class sizes and the ability to personalise learning, our educators forge meaningful connections with every girl, ensuring their growth and development.

The active involvement of our classroom teachers and our specialist teachers in Kapa Haka, Performing Arts, Music, Physical Education, Sports, Art, Science, Mechatronics, and Languages significantly enriches the learning experience of each student.

Selwyn House School is committed to providing a comprehensive learning programme for each student, to ensure their diverse learning style is catered for.

In addition to our classroom teachers, our Learning Enhancement Centre collaborates closely with students and their families to address their specific needs.

# Pastoral care & wellbeing

The entire school is committed to developing a strong sense of personal self-worth in each girl by immersing them in a safe and nurturing environment. Each girl is inspired to think about the kind of person she wants to be, not just what she wants to do. Girls participate in a daily pastoral care and wellbeing programme that is specifically tailored for their age. This programme places an emphasis on each individual girl's understanding of her own self-worth, whilst being empathetic to the world around them. Each student is also matched with a 'buddy' from another year level, which provides an invaluable mentoring relationship.

Our commitment to nurturing and supporting our students goes beyond academics. We are dedicated to nurturing their interpersonal skills, honing their ability to navigate social dynamics, and cultivating enduring friendships. Through team building, heightened social and cultural awareness, and promoting a robust sense of personal self-worth, we endeavour to equip our students with the essential tools for success in an ever-changing world.





# Leadership

We believe every girl has leadership qualities. All Selwyn House students are encouraged to serve in leadership roles within the school and as role models to younger students. The emphasis on growing leadership skills is evident at all year levels within the school.

Selwyn House School has a unique and comprehensive leadership programme specifically designed for our Year 8 girls. Each student has a designated leadership role where they are supported to step up within their school community and lead in a specific area. The leadership programme provides opportunities for involvement in practical, real-life actions, which develop and strengthen leadership skills.

Many Selwyn House students go on to assume leadership roles in their secondary schools. We see this as an indicator of our successful approach to developing leaders.







# Building up STEAM

STEAM is an educational approach that uses Science, Technology, Engineering, the Arts and Mathematics as access points for guiding student inquiry, collaboration, and creative and critical thinking.

Our STEAM Hub provides every student from Year 1 to Year 8 access to state-of-the-art equipment. We have a variety of workshop tools, a kiln, art equipment, a laser cutter, multiple 3D printers, and sophisticated camera equipment to inspire the creative mind. The dedicated Food Technology kitchen is purpose-built for the age of our students.

Science provides the opportunity for in-depth exploration of the living, physical and material worlds, as well as planet Earth and beyond. To explore these areas, students are immersed in a well-resourced, dedicated laboratory led by specialist teachers.

Mechatronics is taught across all year levels, to ensure that each student is fully prepared to lead in a future that is heavy in technology. Girls learn the foundations of mechanical and electrical knowledge through activities such as creating robots, coding and building from upcycled materials.

Students have the opportunity to utilise the practical technology skills they have acquired to design and build their own projects as well. These have included bending wood to make skateboards, trialling exotic new plastic filaments to 3D-print flexible pencil cases, coding micro-controllers to create wearable electronics, making hydraulically controlled robot arms and creating fun new games for the playground.

Senior students explore the importance of Artificial Intelligence (AI). Mixing both theory and practice, the girls discover what AI is, what it isn't, and how it affects them in their daily lives.

## OPPORTUNITIES & CLUBS

Science Fair

Code Club

Junior Mechatronics Club

Senior Mechatronics Club

Science Club

Cantamaths

# Visual Arts

Students across all year levels immerse themselves in a variety of experiences that authentically capture the expansive world of visual arts. This includes, but is not confined to, drawing, illustration, installation art, printmaking, painting, photography, graphic design, sculpture, textiles and digital art.

In line with the PYP curriculum, by engaging with Visual Arts, all students learn creatively, critical thinking and problem-solving skills. Through exposure to a wide variety of artists, both locally and globally, in the present and throughout history, students gain a deeper insight and appreciation of this creative discipline.

## OPPORTUNITIES & CLUBS

Digital Art Club

Junior Art Club

Senior Art Club





# Performing Arts

Performing Arts, such as Music, Dance and Drama, provide students with the tools to learn how to express themselves creatively while further strengthening their communication skills.

Exposure to different forms of Performing Arts introduces students to various cultures and traditions, reinforcing the importance of a global mindset.

The Performing Arts curriculum for all year levels, when delivered under the PYP framework, provides students with multiple opportunities to work collaboratively, try something new, take risks and develop a sense of accomplishment. Learning is shared in both formal and informal settings and across multiple curriculum areas.

Highlights of this learning are brought to life for the entire community with various annual and biennial productions, culminating in the highly regarded biennial Year 7 and 8 School Production.

## OPPORTUNITIES & CLUBS

Mana Kapa Haka  
(Performance Group)

Speech & Drama

Year 1 & 2 Annual  
Production

Years 3 & 4 Biennial  
Production

Years 7 & 8 Biennial  
Production

Glee Club

# Music

The Music curriculum for Years 1– 8, opens doors for students to appreciate musical forms, genres and artistic expression. It encourages them to dig deeper into rhythm, melody, harmony and composition. This allows students to express themselves in ways that words alone cannot.

A PYP music classroom provides an environment that stimulates and challenges students. As they explore, students become inquisitive learners, honing their skills in reading, music, composing, attentive listening, playing instruments and performing. This reflective journey also helps students better understand the world around them and establish personal connections.

## OPPORTUNITIES & CLUBS

Training Strings

String Ensemble

Junior Chamber Choir

Senior Chamber Choir

Curriculum-based Class Choirs

Orchestra

Jazz Band

Recorder Ensemble

Djembe Drumming

Ukulele Club

*Lessons in a variety of musical instruments are available on-site with highly qualified specialist and itinerant teachers:*

Piano, Voice, Guitar, Violin, Cello, Recorder, Flute, Clarinet, Saxophone, Trumpet, Trombone, French Horn, and Percussion.







# Physical Education & Sport

Physical Education in a PYP school is about more than just student participation in sports and games.

Its purpose is to develop a combination of transferable skills promoting physical, intellectual, emotional and social development; to encourage present and future choices that contribute to long-term healthy living; and to understand the cultural significance of physical activities for individuals and communities.

Specific opportunities for learning about movement and through movement in various contexts are provided. Students of all abilities are challenged to improve their movement skills but are also supported and encouraged to enjoy physical activity and see it as part of a healthy and active lifestyle with connections to other areas of the curriculum and community.

In addition to timetabled Physical Education lessons, all students in Years 1–3 take part in our intensive swim programme during Terms 1 and 4. Groups are led through a progression of water confidence and stroke development skills in our on-site heated indoor pool.

Selwyn House School offers a vast range of different sporting opportunities throughout both winter and summer terms.

- Students in Years 1 and 2 have opportunities to participate in skill-based sports sessions on the school turf, field or in the Atrium during the winter months.
- Students in Years 3–8 have opportunities to participate in weekly competitions and also tournament style events.

In addition to the optional sports, all students in Years 5–8 take part in Thursday Weekly Sport during Terms 2 to 3. Selwyn House has 18–20 teams that compete in the Primary Sports Canterbury Thursday Competition each week. Together with the Year 3 and 4 students who opt into a winter sport, it amounts to over 200 Year 3–8 students playing at least one sport during the winter terms.

With passionate and professional coaches, the girls are well supported to develop the necessary skills to excel and compete at a high level.

## SCHOOL EVENTS

*With opportunities to represent the school at Zone and Canterbury events.*

Cross Country

Athletics Day

Swimming

## WINTER SPORT – TERMS 2 & 3

Netball

Hockey

Football

Basketball

Duathlon

Skiing\*

Gymnastics\*

Fencing

## SUMMER SPORT – TERMS 1 & 4

Touch

Triathlon

Water Polo

Cricket\*

Netball

Hockey

Futsal

Tennis

Volleyball

Fencing

*\* Denotes tournament only opportunities.*

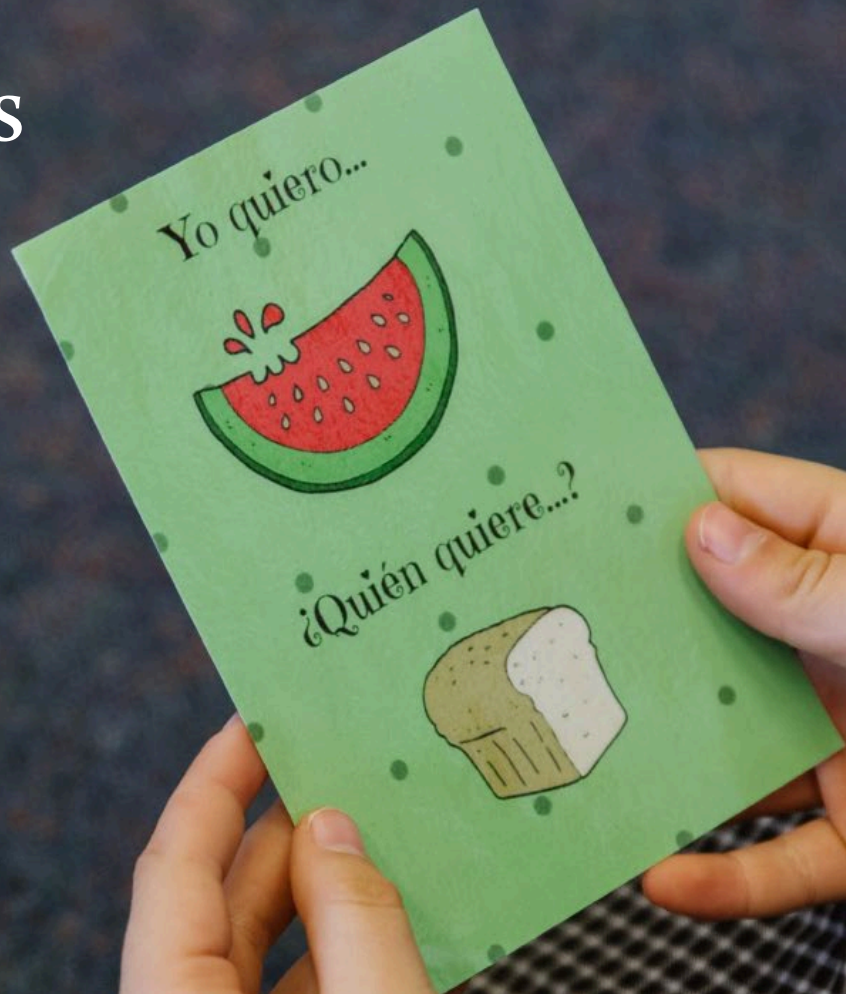






# Languages

As an International Baccalaureate school, we are committed to creating learning environments that expose students to different languages to develop international-mindedness and appreciation of other cultures. By learning additional languages, students develop an improved capacity to think, talk and reflect on how languages work. By making these connections, we deepen our understanding of alternative perspectives, improve problem-solving skills and think more creatively and compassionately about the world around us.





# More to discover

Year 8 Leadership Programme

Creative Writing

Literature Competitions

Kapa Haka

UNESCO Group

Envirogroup

Future Problem Solving

Community Problem Solving

In-school Problem Solving

Chess Club

Buddy System

House System

Jump Jam

International Day

Alumni Events

Selwyn House Parents' Association Events

After School Clubs

Transition to School Programme

Playgroup

---

## CAMPS & EXPERIENCES

Year 4 Camp

Year 5 Camp

Year 6 Camp

Year 7 Camp

Year 8 Camp

Space Week



# The Selwyn House community

## BOARDING

Selwyn House School has a dynamic Boarding House that is home to up to 25 students (ages 9 to 13).

We pride ourselves on creating a positive environment where the girls are able to develop their academic, social and life skills. The girls are supported by a caring and professional team, who take pride in helping each girl reach her full potential. Boarders are housed in the Somers Cox Boarding House, which is located behind the school administration building. Casual boarding arrangements can also be made.

## INTERNATIONAL STUDENTS

At Selwyn House School, we strive to grow knowledgeable and caring individuals, who help to create a better, more peaceful world through intercultural understanding and respect. This makes it a perfect place for international students to learn, grow and thrive.

Selwyn House offers small class sizes and an International Baccalaureate curriculum aimed at developing the academic, social and emotional wellbeing of each girl. Selwyn House School prepares girls for further study within New Zealand or back in their own country. We encourage all girls to become involved in the life of the school.

## SELWYN HOUSE SCHOOL ALUMNI

Selwyn House School Alumni provides a link between past pupils and the school. Alumni come back as speakers, mentors, coaches and role models for our young aspiring leaders. They support the school through fundraising, enhancing our profile in their communities, and participating in many events.

**Contact:** [community@selhouse.school.nz](mailto:community@selhouse.school.nz)

## SELWYN HOUSE PARENTS' ASSOCIATION (SHPA)

This energetic group of parents and caregivers is focused on building community by encouraging involvement and participation. Research clearly states that active parent/caregiver involvement in a child's school life assists in developing their talents, self-esteem, and character. Throughout each school year, SHPA hosts a variety of fun events. They also undertake a number of fundraisers in order to enhance school resources and facilities.

**Contact:** [shpa@selhouse.school.nz](mailto:shpa@selhouse.school.nz)

# Facilities

Selwyn House School is located in the heart of Merivale, Christchurch in close proximity to Hagley Park, Christchurch Botanic Gardens and the central city.

Each classroom is designed specifically to meet the learning needs of the year group with designated spaces for each student's personal belongings. Our classrooms are further complemented by our wider school facilities.

- Indoor heated swimming pool offering swimming lessons from pre-school age to Year 8
- Multi-purpose all-weather astroturf field
- Outdoor courts for basketball, hockey, netball and tennis
- Dedicated STEAM, Science and Mechatronics classrooms
- A well-equipped, dedicated art space with a kiln, printing press and large areas which facilitate creativity
- A purpose built Food Technology classroom suitable for primary age students
- Multi-purpose library with spaces for presentations and private study. The catalogue of publications, both in hard copy and electronic versions, are chosen specifically for Selwyn House School students
- The Carolyn Fletcher Performing Arts Centre
- A modern boarding house with full-time and casual boarding
- A co-educational pre-school
- Large playground enjoyed by all year levels





