

SELWYN HOUSE SCHOOL

Prospectus

An International Baccalaureate School

WWW.SELWYNHOUSE.SCHOOL.NZ





SELWYN HOUSE SCHOOL

Girls thrive here





Welcome Nau mai, haere mai Bienvenidos

Welcome to Selwyn House School, a Year 1-8 girls' school in Christchurch, New Zealand, that provides a future-focused education, built on nearly a century of tradition.

Our ultimate goal at Selwyn House is to equip all students with the knowledge, skills and attitudes for their future lives, and ultimately their careers. Learning is built around making positive, healthy connections focused on collaboration, empathetic understanding and forming lifelong relationships.

We recognise the importance of developing interpersonal skills such as self-regulation, curiosity and tolerance during these formative primary school years, and our educational programmes are designed to incorporate these skills in everything we do.

We prepare our students for the challenges and opportunities they will encounter using the latest technological tools within a creative and nurturing environment.

With access to modern facilities and outstanding teachers, our students learn to think creatively, work collaboratively and to approach each new challenge with a can-do attitude. They are problem-solvers and powerful thinkers – attributes that are needed and valued in the future workforce.

Through this well-rounded and supportive learning experience, Selwyn House students become confident and informed global citizens, eager to take their place in the world.

We warmly invite you to contact our Enrolment Office and visit Selwyn House School to experience our outstanding learning environments and programmes for yourself, and give your child the benefit of a Selwyn House education.



our vision

To develop internationally minded students who, recognising their common humanity and shared guardianship of the planet, help to create a better and more peaceful world.

our mission

We inspire our students to learn through continuous inquiry, empowering them with the skills, knowledge, courage and optimism to become caring, active, lifelong learners who enhance the lives of others.

our values

Our values are at the centre of everything we do. The International Baccalaureate created the IB Learner Profile as a set of attributes that all IB schools strive to develop in their students, employees and other community members. Selwyn House has embraced the IB Learner Profile. We have adopted the attributes as our school's values. Our students and teachers work together to embrace and develop these qualities in one another.

INQUIRERS

KNOWLEDGEABLE

THINKERS

COMMUNICATORS

PRINCIPLED

OPEN MINDED

CARING

RISK-TAKERS

BALANCED

REFLECTIVE



Our educational community

Selwyn House School was founded in 1929 by Charlotte Mason, who was focused on educating each child as an individual, adhering strongly to a literary and verbal approach. She implemented a curriculum which included conventional subjects complemented by the study of art, music and the introduction of the Nature Diary. Charlotte was an educational pioneer and believed that all children were capable of achieving good results when hard work and sound achievement were encouraged.

Today, Selwyn House School features modern facilities, outstanding resources, and a rigorous future-focused curriculum. All of these complement Charlotte's original curriculum and vision of meeting each girls' individual learning needs.

Selwyn House School gives girls the tools to excel in life. It is a place where girls learn to express themselves both intellectually and creatively while creating lifelong friendships with peers. We nurture and encourage girls as they are becoming young women of self-worth. Reflection and understanding, along with collaboration and a high level of engagement, provide a dynamic educational environment.

Our approach recognises and enhances the different capabilities of each individual student and with small class sizes our teachers can build meaningful relationships with each girl. Learning is further enhanced by the active role that our specialist teachers in Performing Arts, Music, Physical Education, Sports, Art and Spanish invest in daily learning.

We provide a comprehensive programme for learning support and extension, tailored specifically for each student. Input from our resident psychologist, Gifted and Talented Co-ordinator, Learning Support Teacher, and others allows us to cater to the specific needs of our girls. Smaller class sizes mean we are able to focus on the student's individual requirements. Development and progress are monitored regularly through a range of assessment tools and authentic rich tasks.

With such a wide variety of programmes on offer, each girl has many opportunities to uncover new interests, passions, and discover herself.



*Selwyn House School
is a nurturing,
internationally-
minded community,
providing a globally
relevant education.*





Education through experience

Everyone is on the one campus, from five-year-olds in the Junior School through to senior leaders in Year 8. Our girls gain confidence in their surroundings and a sense of place in their community as they advance through the school. Our Buddy System pairs older girls with younger girls, allowing an exchange of knowledge and ideas. There is also a House System which encourages girls to interact with other students of all ages.

Our focus from early childhood to Year 8 is on the total growth of the developing girl. This encompasses her intellectual, social, physical, emotional, spiritual and cultural needs.

At Selwyn House School we foster a love of learning, and encourage students to think and act as global citizens. Capable and confident, our girls are the learners and leaders of the future.

Our goal is to encourage each girl as she learns to be her best self.



114

RECIPIENTS OF **NATIONAL OR INTERNATIONAL AWARDS**, BETWEEN 2017–2020

92%

OF OUR STUDENTS FROM YEARS 1–8 ARE INVOLVED WITH AT LEAST ONE **SPORT**

70+

SPECIALIST, ITINERANT, CLUBS AND ADDITIONAL OPPORTUNITIES AVAILABLE

*Statistics correct as at February 2021

Building up STEAM

STEAM is an educational approach that uses Science, Technology, Engineering, the Arts and Mathematics as access points for guiding student inquiry, collaboration, and creative and critical thinking.

STEAM HUB

At Selwyn House, we not only encourage our girls to work in advanced STEAM fields, we want our girls to lead them. 21st century skill sets are all nurtured and grown within an engaging environment full of authentic learning experiences and built on a foundation of empathy.

Our STEAM Hub provides every student from Year 1 to Year 8 access to state-of-the-art equipment. We have a variety of workshop tools, sewing machines, a kiln, art equipment, Apple TVs, a laser cutter, multiple 3D printers and lots of other materials to inspire the creative mind. The dedicated Food Technology kitchen is purpose built for the girls.

MECHATRONICS

Mechatronics is taught to every student in the school to ensure that each Selwyn House girl is fully prepared to lead in a future that is heavy in technology. Girls learn the foundations of mechanical and electrical knowledge through activities such as creating robots from up-cycled objects, coding and building catapults.

Students have the opportunity to utilise the practical technology skills they have acquired to design and build their own projects as well. These have included bending wood to make skateboards,

trialling exotic new plastic filaments to 3D-print flexible pencil cases, sewing dolls' clothes, inventing better picnic cutlery and making fun new games for the playground.

In a typical lesson you will hear the sounds of girls sawing wood, asking questions, typing code, tinkering, negotiating, celebrating, 3D printing, searching through boxes, and laughter.

AI

Selwyn House School has developed a curriculum to teach senior girls about the importance of Artificial Intelligence (AI). Mixing both theory and practical, the girls discover what AI is, what it isn't, and how it affects them in their daily lives. This eye-opening course fits within the school's mechatronics program.

ROBOTICS

Robotics is introduced from Year 1 as an interdisciplinary, project-based learning activity drawing mostly on mathematics, science, and technology. It offers tremendous educational benefits.

Robotics implements 21st century technologies, firing up imagination and creativity. These activities are valuable learning experiences, fostering problem-solving skills, communication skills, teamwork skills, and independence.

Our girls are encouraged to enter RoboCup competitions. The focus of RoboCup is for students to learn from each other, by watching robots compete and sharing solutions to the problems presented.



Our students develop skills so that they are equipped for our rapidly changing world.



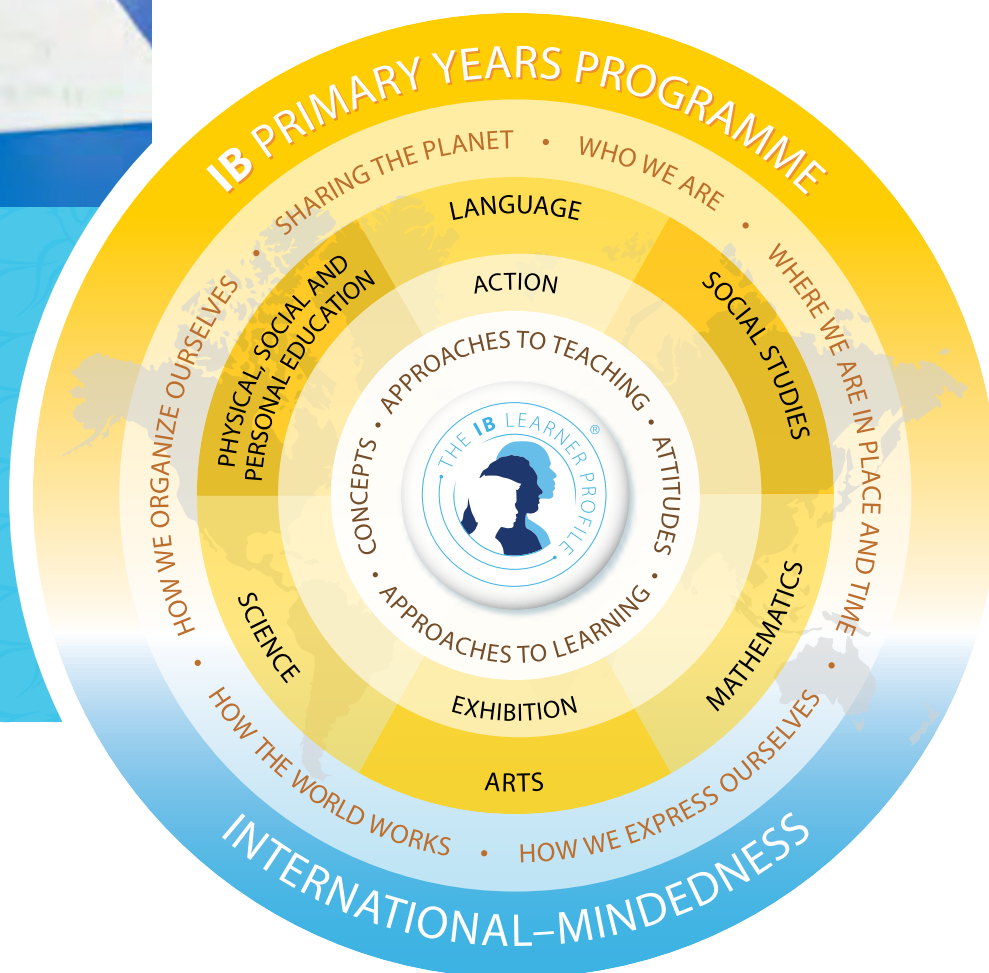


Primary Years
Programme

The IB Primary Years Programme

Selwyn House School is proud to deliver the International Baccalaureate (IB) Primary Years Programme (PYP) from Pre-school to Year 8. The IB offers high quality education which encourages international mindedness and a positive attitude to learning. We develop in our students an understanding that they can make a difference to their world, both locally and globally.

Selwyn House and the PYP are committed to structured, purposeful inquiry, based on themes of global significance.



The curriculum at Selwyn House School draws upon the essential elements featured in the model above, and is designed to develop global learners and leaders.

PYP ESSENTIAL ELEMENTS

There are essential elements that underpin the PYP curriculum framework.

KNOWLEDGE

Significant, relevant content that we wish the students to explore and know about, taking into consideration their prior experience and understanding. This is reflected through the six subjects of:

- Language (English and Spanish)
- Mathematics
- Science and Technology (which at Selwyn House includes STEAM and Mechatronics)
- Personal, social and physical education
- Social Studies (History and Geography)
- Arts (Performing Arts – Music and Drama, and Visual Art)

CONCEPTS

Powerful ideas that have relevance within and across the subject areas:

- Form: What is it like?
- Connection: How is it connected to other things?
- Function: How does it work?
- Perspective: What are the points of view?
- Causation: Why is it like it is?
- Responsibility: What is our responsibility?
- Change: How is it changing?
- Reflection: How will we know?

Teachers and students use key questions to structure their units of inquiry. The essential elements provide the basis of a primary education that is challenging, significant, relevant, and engaging.

APPROACHES TO LEARNING – SKILLS

The skills that students are explicitly taught at Selwyn House are:

- Social skills
- Communication skills
- Research skills
- Self-management skills
- Thinking skills

ACTION

Valuing thoughtful and appropriate action. We provide students with opportunities to reflect upon, choose and act on issues of importance and relevance to them.



*For more information
about the IB Primary
Years Programme,
please visit
[selwynhouse.school.nz/
ib-programme](https://selwynhouse.school.nz/ib-programme)*



*We develop inquiring
and empathic minds
while building strong
knowledge foundations.*

Junior School Years 1–4

Discoveries are made every day in our Junior School, sparking a joyous love of learning that will stay with your girl throughout her life.

Selwyn House School is a safe place to learn and mature. Our girls develop a sense of shared purpose in an environment that is warm, exciting, challenging and respectful.

From Year 1 we teach the girls to express themselves as competent communicators and to develop self-reliance. These qualities are complemented by girls developing positive relationships with their peers and teachers.

Our small classes allow for the personal attention that helps a young girl to thrive by building confidence and self-esteem, and fostering individuality.

JUNIOR SCHOOL CURRICULUM

Our Junior School curriculum is based on best practice teaching and is carefully planned, always with our girls' knowledge, needs, interests and varying abilities in mind. We build strong foundations in literacy and numeracy, and Spanish enriches our programme.

Art*, Beach Education (Year 4),
Mathematics, Mechatronics*,
Music*, Nature Diary (Year 3 & 4),
Performing Arts*, Physical Education*,
Reading, Science, Spanish*, Swimming,
Units of Inquiry, Writing.

* Denotes taken by specialist teacher.

ADDITIONAL OPPORTUNITIES

In Terms 2 to 4, there is a skills-based sports programme run at lunchtime to promote confidence and fun.

Our swimming programme includes twice-yearly three-week blocks of daily lessons to encourage accelerated progress.

In Years 1 and 2, students perform in the annual Junior Production and students in Years 3 and 4 perform in a bi-annual production.

Lessons in a variety of musical instruments and dance are available on site with highly qualified specialist and itinerant teachers.

In Year 4, girls attend camp in Term 1.

In Year 4, girls BYOD (Bring your own device).

PASTORAL CARE

Our junior girls participate in a daily pastoral care programme. They are also each assigned a 'buddy' from the Senior School. This buddy provides an invaluable mentoring role.





An all girls' school creates a culture of academic achievement where each individual's potential is realised and self-exploration and growth is freely and safely nurtured.



Middle School Years 5 & 6

Years 5 and 6 encompass a critical phase of personal and intellectual development that can vary enormously from girl to girl. Eager to learn, full of energy, curious, ready for adventure, sociable and ready to solve the problems of the world.

We have designed learning experiences and structures that promote the development of positive, healthy girls. The teaching programme is an exciting, engaging and relevant to the fast-changing world in which we live. The focus is on encouraging greater independence, and increased responsibility for the student's own learning, in preparation for a smooth transition to our Year 7 and 8 programmes.

By supporting and nurturing the girls, we build on their abilities to interact with peers, navigate social cues and maintain friendships. Team building, social and cultural awareness, and a strong sense of personal self-worth are crucial components of our education at Selwyn House School.

YEARS 5 & 6 CURRICULUM

At this level the focus is on fundamental knowledge, skills and understanding. Girls are provided with opportunities to express their ideas, and to follow independent lines of inquiry.

Art*, Beach Education, Health, Literacy, Mathematics, Mechatronics*, Music*, Performing Arts*, Physical Education*, Science, Spanish*, Units of Inquiry.

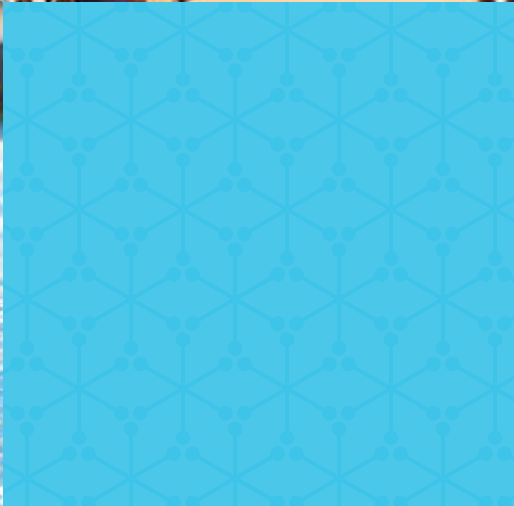
* Denotes taken by specialist teacher.

E-LEARNING IN YEARS 5 & 6

Technology is used at all levels of education at Selwyn House. We see it as a vital tool in providing a relevant, globally minded education. It is embedded in everything we do.

We want to ensure that our students have access to the latest technology, and are committed to ensuring that online learning happens in appropriate ways.

We are proud that at Selwyn House transdisciplinary learning is an embedded, well-established and rigorous pedagogy.





Senior School Years 7 & 8

In Years 7 and 8 every girl is encouraged to learn and thrive in new ways, to try different things, and to be resilient. The Senior School programme is carefully crafted to ensure that each girl is exposed to a rigorous spectrum of intellectually engaging experiences and challenges. After completing the Senior School programme, she will be fully prepared for the next step in her academic career, well equipped with valuable life and social skills and ready to face any challenge with confidence.

The senior programme offers extension and educational support according to each girl's individual needs. All senior girls also participate in opportunities such as the Otago Rail Trail camp, Years 7 and 8 Production (bi-annual), and running a whole school market day.

CREST & EXHIBITION PASSION PROJECTS

Community, respect, and empathy are strong elements of the senior programmes.

YEARS 7 & 8 CURRICULUM

Our curriculum helps girls identify their own strengths and talents, and experience an extensive range of subjects. We enhance the capabilities of each student, seeking to tap into each girl's potential. Our core subjects give students a strong foundation in these essential learning areas:

Art*, English, Health, Mathematics, Mechatronics*, Music*, Performing Arts*, Physical Education*, Science*, Spanish*, Social Studies, Units of Inquiry.

* Denotes taken by specialist teacher.

Selwyn House has developed a curriculum to teach senior girls about the importance of Artificial Intelligence (AI). We want girls to know what AI is, how to create it, and to understand the impact of AI. We want to empower girls to be ready for a world with AI.

In Year 7, all girls take part in the Royal Society of New Zealand's First CREST programme. CREST is a robust and interesting learning experience where each girl devises a question that is of interest to them and conducts an original scientific inquiry around it, or designs and constructs a technological product to meet a need that they have identified.

Exhibition is the culminating experience of a child's journey through the PYP. In Year 8, girls are focused on a collaborative Exhibition Passion Project. These are a year-long inquiry where girls explore something they are deeply passionate about, developing their skills and using them to make a positive difference in their world. Girls are mentored to support them in this venture. The growth seen in the girls as they work through this process is always impressive.

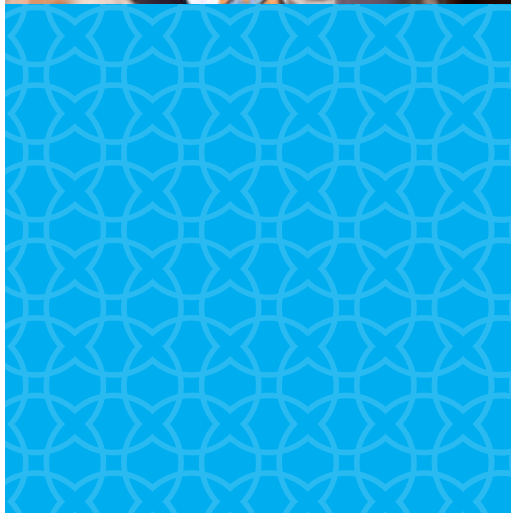
*Challenge and choice
create opportunities for
every girl to discover
who she is, and
who she wants to be.*





WELLBEING

The wellbeing of each girl remains a focus of the Senior School. The entire school is committed to developing a strong sense of personal self-worth in each girl by immersing them in a safe and nurturing environment. Each girl is inspired to think about the kind of person she wants to be, not just what she wants to do. Questioning the kind of person she wants to be, helps her to be conscious of the identity she is creating.



LEADERSHIP

Every girl has leadership qualities and senior girls are expected to serve in leadership roles within the school and as role models to younger students.

Selwyn House School has a unique and comprehensive leadership programme specifically designed for all Year 8 girls. They each have a designated leadership role. The leadership programme provides opportunities for involvement in practical, real-life actions which develop and strengthen leadership skills.

Many Selwyn House girls go on to assume leadership roles in their secondary schools. We see this as an indicator of our successful approach to developing leaders.



Opportunities to discover

SPORT

WINTER SPORT – TERMS 2 & 3

Netball
Hockey
Football
Orienteering*
Basketball
Equestrian*
Skiing*
Jump Jam
Gymnastics*
Fencing
Aerobics

SUMMER SPORT – TERMS 1 & 4

Touch
Duathlon
Triathlon
Water Polo
Cricket*
Netball
Hockey
Futsal
Tennis*
Fencing

**Denotes tournament only opportunities*

SCIENCE AND TECHNOLOGY

Robotics Club
RoboCup Competition
Science Fair
Cantamaths
Code Club
Mechatronics Club
Science Club

MUSIC, ARTS AND LANGUAGES

Art
Violin and Cello (Years 1–8)
Piano (Years 3–8)
Voice, Recorder and Guitar (Years 4–8)
Flute, Clarinet, Oboe, Saxophone, Brass (i.e. Trumpet, French Horn, Trombone) and Percussion (Years 5–8)
String Ensemble
Chamber Group
Senior Chamber Choir
Orchestra
Jazz Band
Recorder Ensemble
Ukulele
Drums
Music Theory
Ballet, Jazz, Contemporary Dance
Speech and Drama
French
Mandarin

FURTHER OPPORTUNITIES

Year 8 Leadership Programme
Year 7 School Recycling Community
Otago Problem Solving
Creative Writing
Kids Lit Competition
ICAS Australian Academic Assessments
UNESCO Group
Envirogroup
Future Problem Solving
Community Problem Solving
In-school Problem Solving
Kapa haka (Years 5–8)
Dance Programme
Photography Club
Chess Club
Buddy System
House System
Peer Mediators





“We chose Selwyn House School because we recognised an environment which would nurture and develop our daughter. We have seen her grow and embrace all the Selwyn House principles. We know that she will continue to achieve great things and will always have her Selwyn House experience to help and guide her.”



Facilities

- Indoor heated swimming pool offering swimming lessons from pre-school age
- Multi-purpose astroturf field for year-round sports play
- Outdoor courts for basketball, netball and tennis
- Dedicated technology hub with 3D printers to create exciting projects
- A well-equipped art space with a kiln, printing press and large areas which facilitate creativity
- A purpose built food technology classroom suitable for primary age students
- Spacious science and robotics lab
- Dance studio
- Multi-purpose library with spaces for presentations and private study. The catalogue of publications both in hard copy and electronic versions are specifically chosen for Selwyn House School girls
- The Carolyn Fletcher Performing Arts Centre
- Each classroom is designed specifically to meet the learning needs of the year group with designated spaces for each girl's personal belongings
- A vibrant and dedicated Spanish room
- A modern boarding house with full-time and casual boarding available
- A co-educational Pre-school



*We enable girls
to develop their
strengths and follow
their passions.*



The Selwyn House community

BOARDING

Selwyn House School has a dynamic Boarding House that is home to up to 25 students in Years 4 to 8 (ages 7 to 13).

We pride ourselves on creating a positive environment where the girls are able to develop their academic, social and life skills. The girls are supported by a caring and professional team, who take pride in helping each girl reach her full potential. Boarders are housed in the Somers Cox Boarding House, which is located behind the school administration building. Casual boarding arrangements can also be made.

INTERNATIONAL STUDENTS

At Selwyn House School, we aspire to grow globally minded learners and leaders of the future. We warmly welcome international students and celebrate the rich diversity and global influences they bring to our community. Selwyn House offers small class sizes and an International Baccalaureate curriculum aimed at developing the academic, social and emotional wellbeing of each girl. Selwyn House School prepares girls for further study within New Zealand or back in their own country. We encourage all girls to become involved in the life of the school. English for Speakers of Other Languages (ESOL) tuition is available to international students.

PRE-SCHOOL

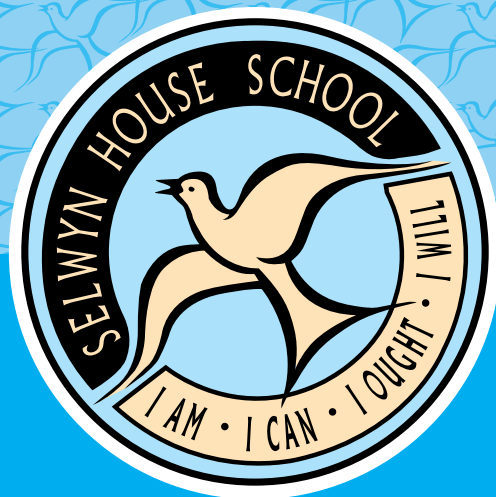
Selwyn House Pre-school provides co-ed early childhood education. Our unique programme in the Pre-school is based on the world-renowned Reggio Emilia approach, complemented by the International Baccalaureate Primary Years Programme (PYP) and the Te Whāriki Curriculum. It celebrates the natural wonder and curiosity of children and fosters a life-long love of learning.

SELWYN HOUSE SCHOOL ALUMNI

Selwyn House School Alumni provides a link between past pupils and the school. Old girls come back as speakers, mentors, coaches and role models for our young aspiring leaders. They support the school through fundraising, enhancing our profile in their communities, and participating in many events.

SELWYN HOUSE PARENTS' ASSOCIATION (SHPA)

This energetic group of parents and caregivers are focused on building community by encouraging involvement and participation. Research clearly states that active parent/caregiver involvement in a child's school life assists in developing their talents, self-esteem, and character. Throughout each school year, SHPA hosts a variety of fun events. They also undertake a number of fundraisers in order to enhance school resources and facilities.



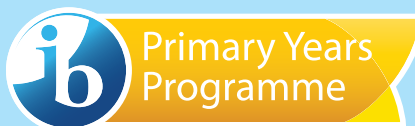
SELWYN HOUSE SCHOOL

Be our guest – schedule your personal tour today.

PHONE +64 (03) 355 7299

EMAIL office@selhouse.school.nz

122 Merivale Lane, Merivale,
Christchurch, New Zealand



WWW.SELWYNHOUSE.SCHOOL.NZ